

Characterisation of *Mycoplasma bovis* associated disease in Danish dairy herds 2010-2014



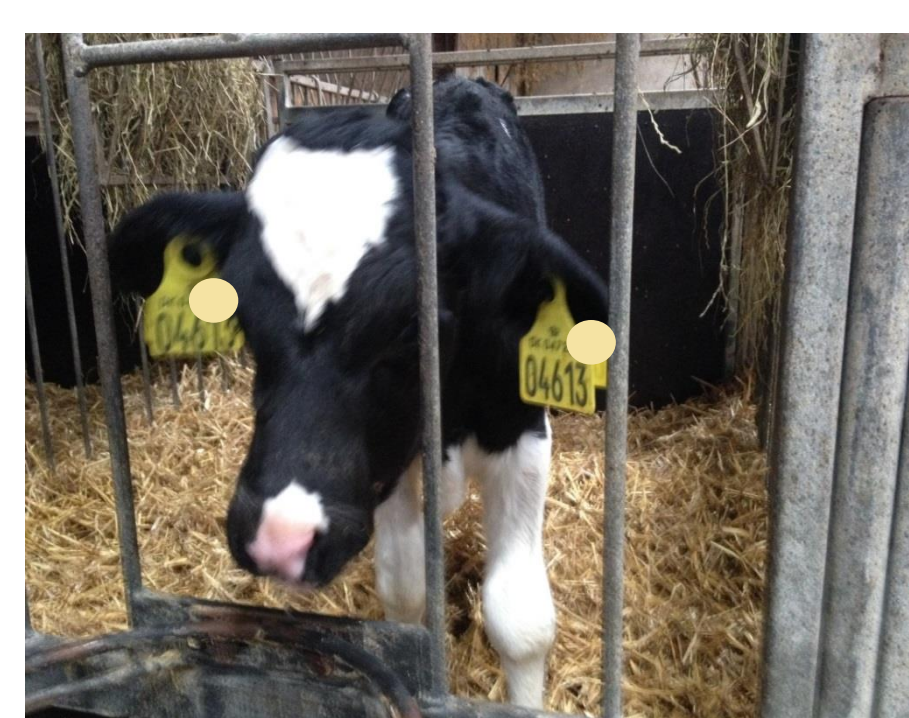
*mbp@sund.ku.dk

Mette Bisgaard Petersen^{1*}, Lene Jensen^{1,2}, Mikkel Bruun Svendsen¹, Kaspar Krogh³, Liza Rosenbaum Nielsen¹

¹ Department of Large Animal Sciences, Faculty of Health and Medical Sciences, University of Copenhagen, Denmark

² Skovbjerg DyrlægeTeam, Glejbjerg, Denmark

³ Veterinary Cattle Specialist, Kolind, Denmark



Background

- Increased focus on *Mycoplasma bovis* in the Danish cattle sector due to many atypical symptoms since 2011
- Lack of knowledge on the clinical presentation and outbreak duration from the farmers' point of view

Study objectives

To **characterise** and estimate the **duration** of clinical outbreaks of *Mycoplasma bovis* related disease in Danish dairy herds

Materials & Methods

- 504 dairy herds identified to contact
- Online questionnaire + telephone interviews
- Responses from 324 farmers
- 123 herds reported having experienced clinical disease related to *Mycoplasma bovis*
- **See poster number 294 for more info**



Conclusions

- 38% of the test-positive herds that we reached reported having experienced a clinical disease (bias?)
- Most outbreaks started in late winter and early spring
- Rarely long outbreaks, but frequently severe disease
- When clinical signs were only reported in young stock, the antibody level in bulk tank milk remained low

Results

Disease characteristics

- Mastitis in 33% of outbreaks
- Otitis media in young stock in 28%
- Arthritis in cows in 21%
- Arthritis in young stock in 37%
- Pneumonia in cows in 60%
- Pneumonia in young stock in 43%
- Other clinical signs: reduced milk yield, fever, dead cows) in 72% of outbreaks



Outbreak duration

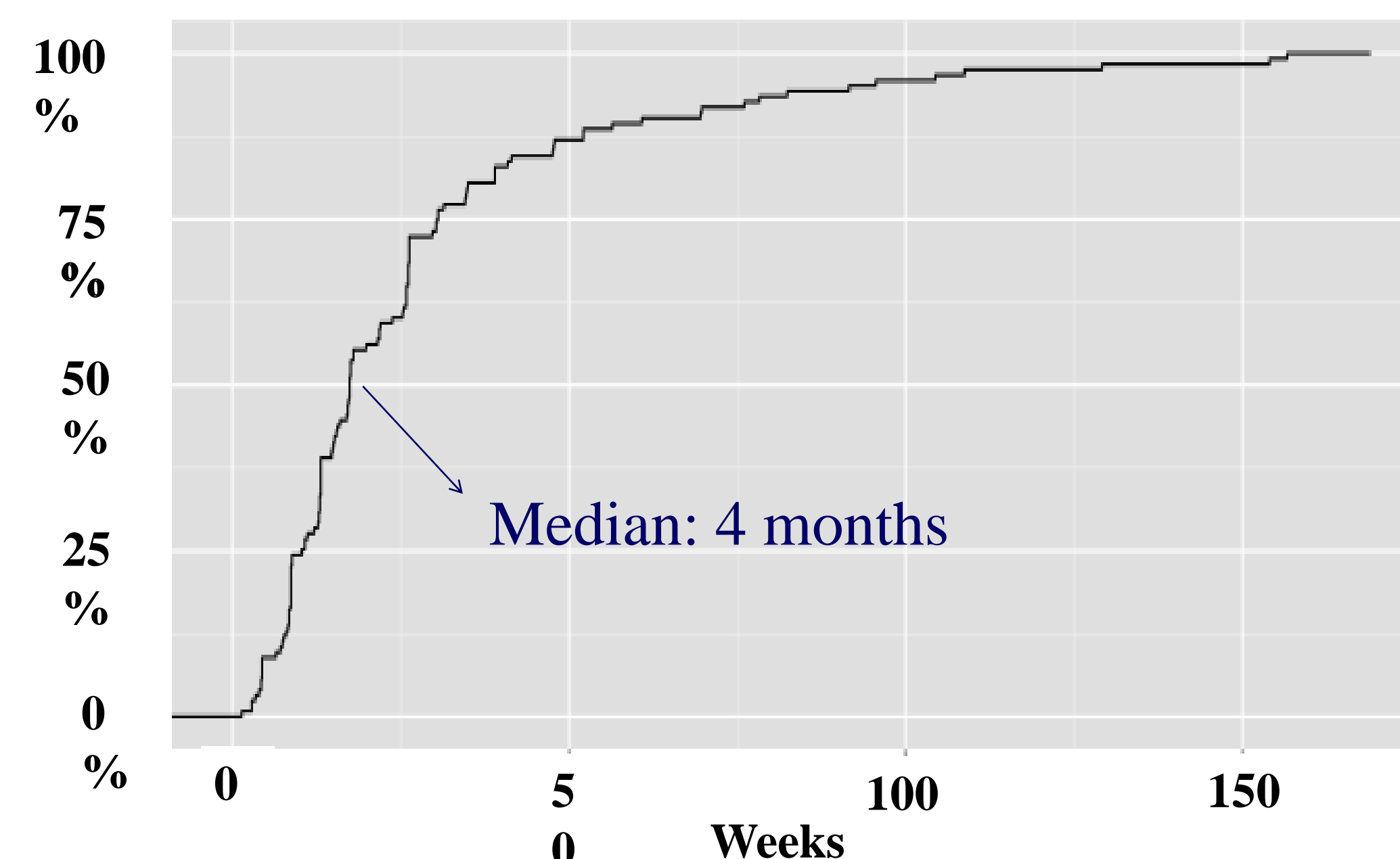


Fig. 1 Farmers estimated duration of disease outbreaks attributed to *Mycoplasma bovis* (n=123)

Bulk tank milk testing

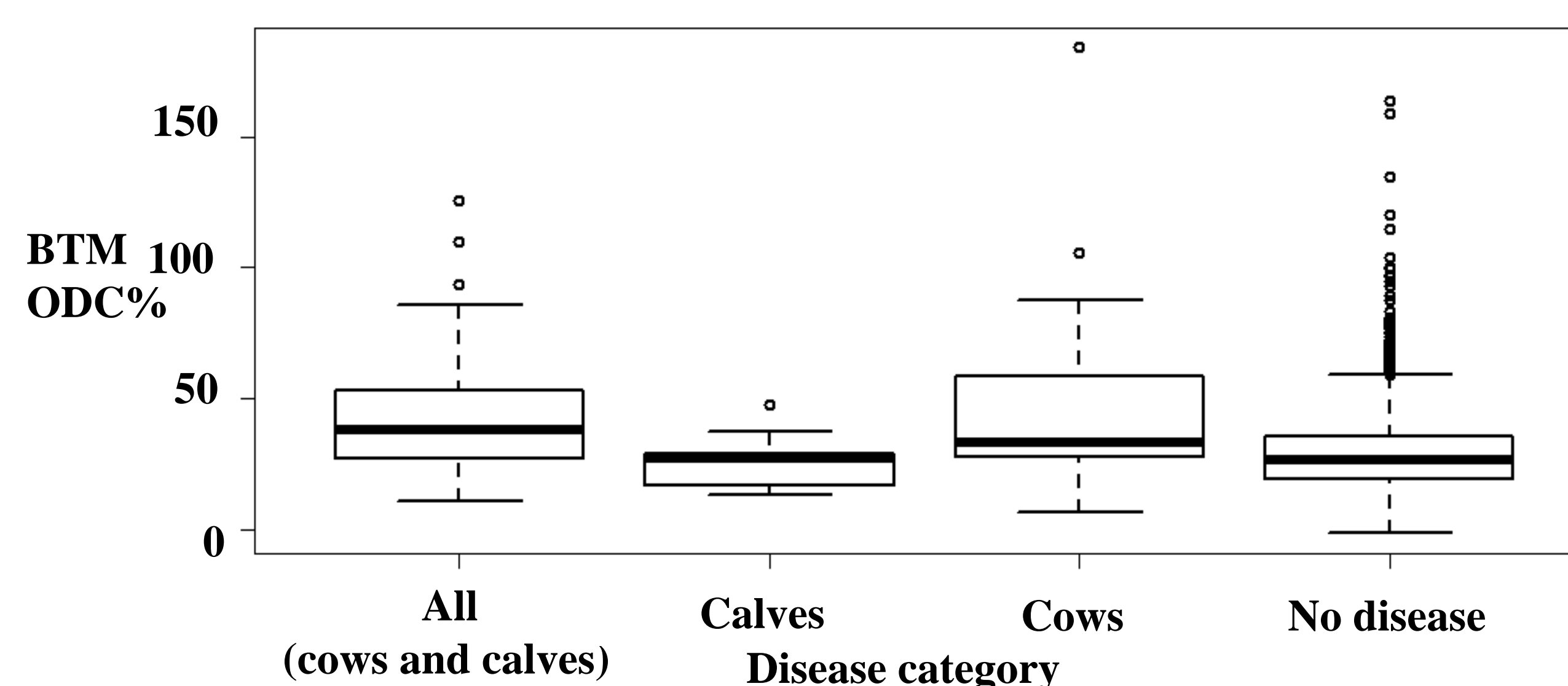


Fig. 2 Bulk tank milk (BTM) antibody levels (ODC%) in three categories of farmer reported primary clinical signs in *Mycoplasma bovis* outbreak or no reported outbreak

Significant difference between:

- "Calves" and "All"
- "No disease" and "All"
- "Cows" and "Calves"
- "No disease" and "Cows"